

Operational Overview



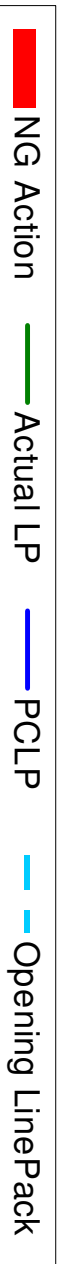
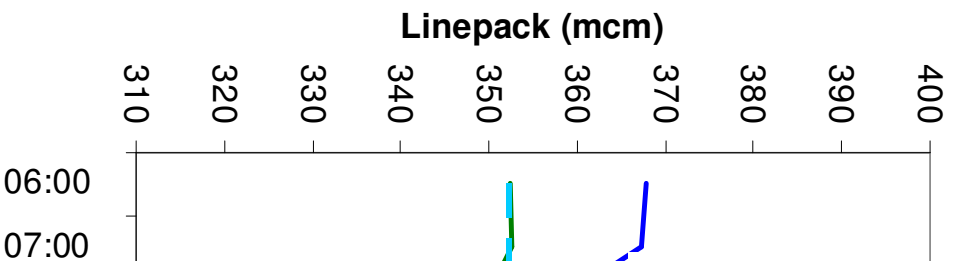
Interesting Day Overview

Operational Overview

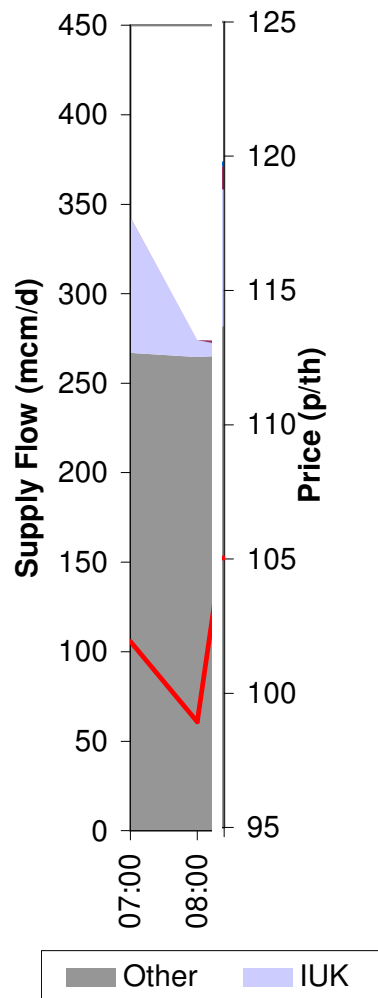


Interesting Day Overview: 22nd March 2013

22nd March: Start of Day Position



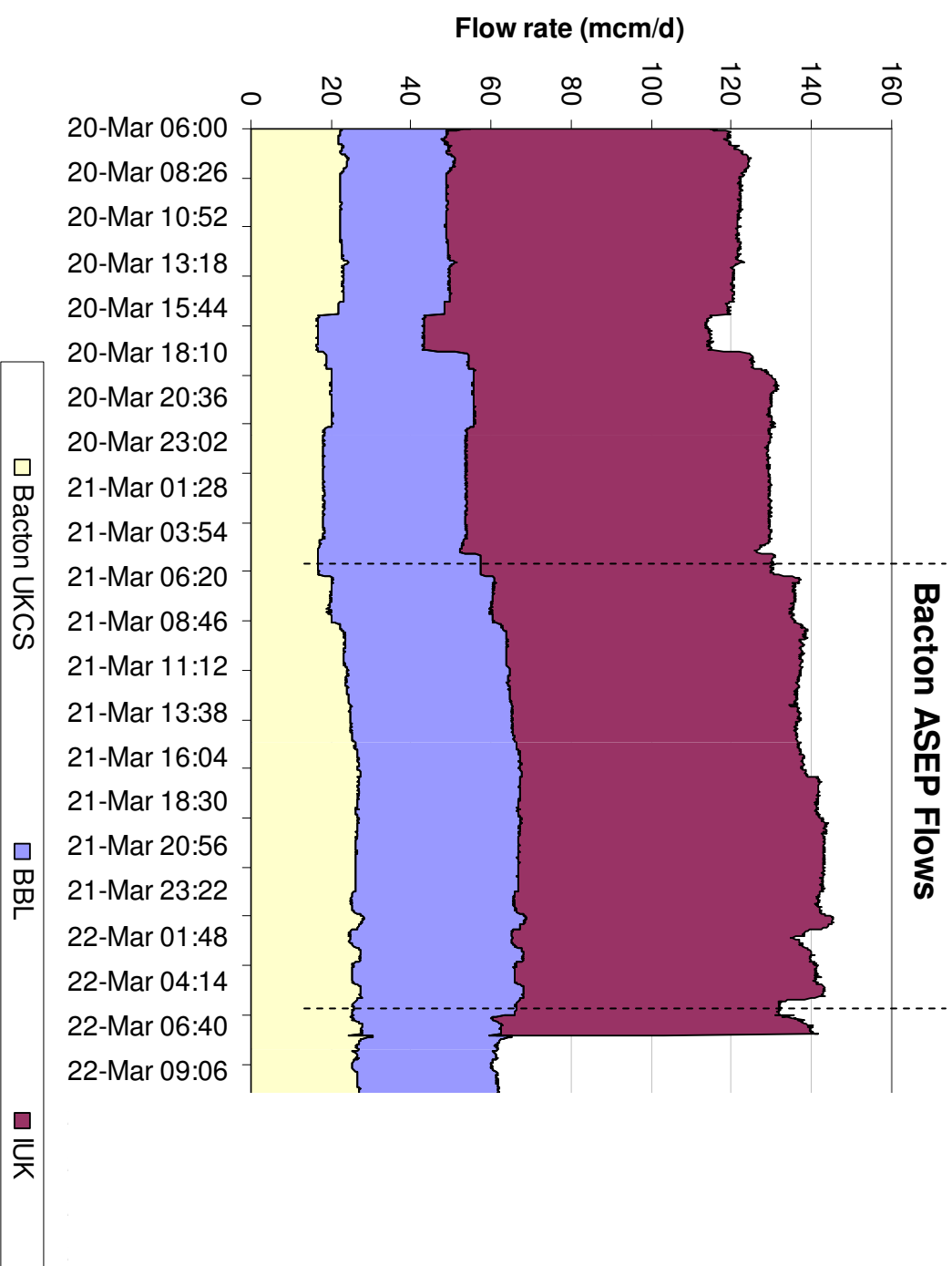
22nd March: Start of Day Position



Bacton ASEP

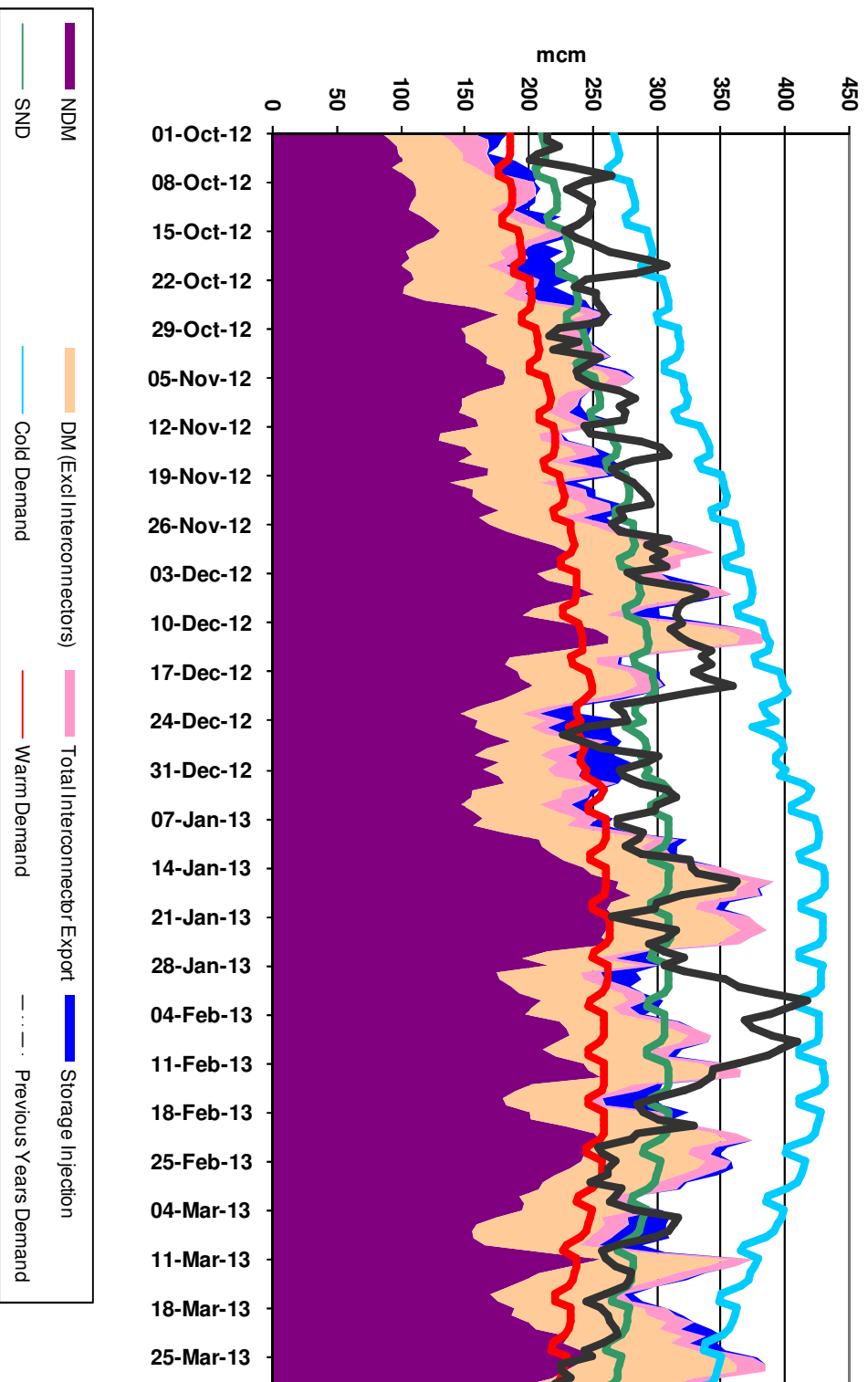


Bacton Flows



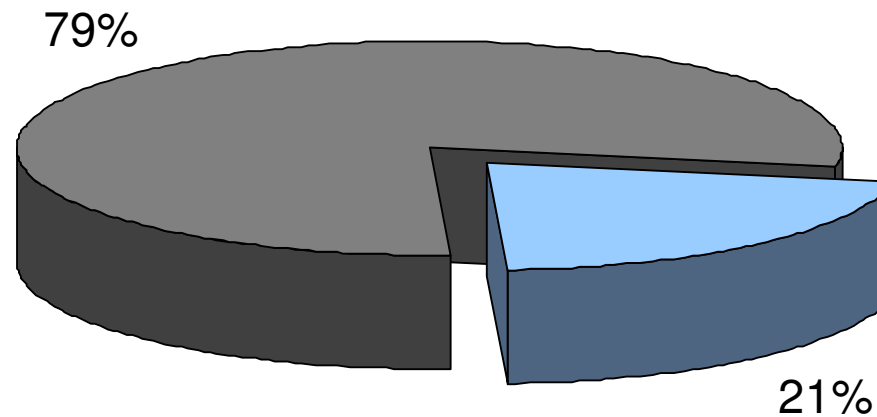
2012/13 Demand

Gas Demand Breakdown
1st October 2012 to 31st March 2013 vs 2011/12



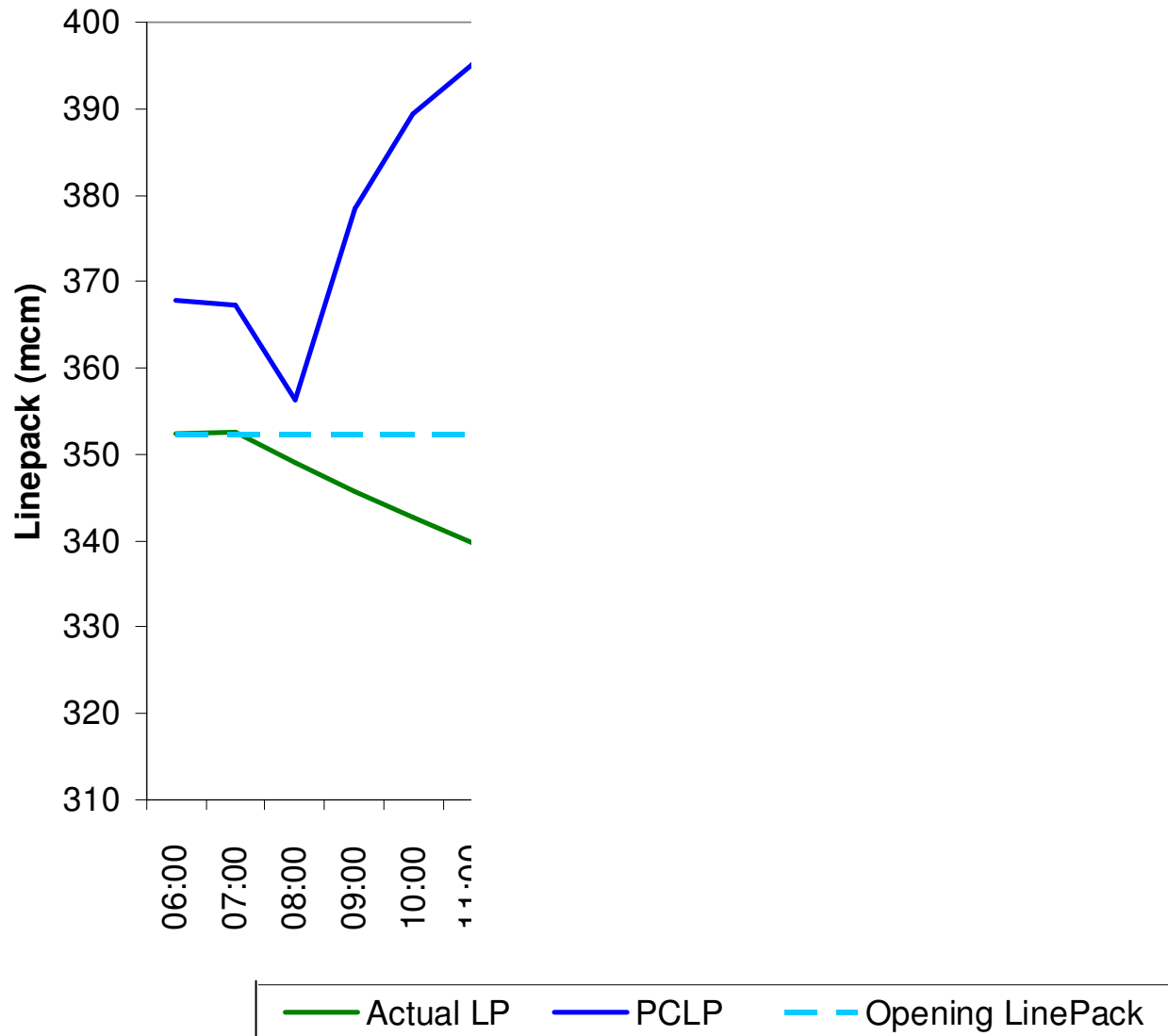
Percentage of Supply

IUK as percentage of UK Supply
21st March 2013



Date	BBL	IUK	Bacton UKCS	Bacton Total	Total Supply
21/03/2013	40.4	73.7	24.9	139.0	345.3

22nd March: Start of Day Linepack



IUK Industry Communications



Media Release

Interconnector (UK) Limited

Date: 22 March 2013

FULL FLOW CAPACITY RESTORED

Interconnector (UK) Limited („IUK“) confirms that full flow has been restored following a component failure that occurred at 7:00am this morning at the Bacton Terminal.

Flows through IUK’s pipeline were disrupted for a period of 8 hours today. This was a result of a failure of a connection to a pump on the hot water system (which heats the gas from the pipeline before entering the UK system). The resulting steam escape triggered a shutdown of operations at the terminal.

Sean Waring, Managing Director of IUK said, “We understand the seriousness of a disruption like this in the current tight energy markets. To date, Interconnector has demonstrated a high level of reliability, but operational upsets do occur from time to time in complex process plant. Our immediate response enabled us to restore flow to full capacity quickly.”

Gas Day 22 March 2013 - Operational Notices

07:32 - Due to a technical issue the Interconnector is currently unable to flow gas. The issue is being investigated and we will provide an update at 08:30 UKT.

08:32 - The fault has been identified and we are seeking to rectify the problem. We remain unable to flow gas. A further update will be provided at 0930 UKT.

09:09 - We are currently experiencing a flow restriction, the end of day will not be met.

09:17 - We are currently unable to flow gas at IBT and IZT, the end of day will not be met.

09:41 - Due to the failure of a water/glycol pump in the Bacton boiler house we are currently unable to flow gas. We are working to resolve the issue. We will provide a further update at 1100 UKT.

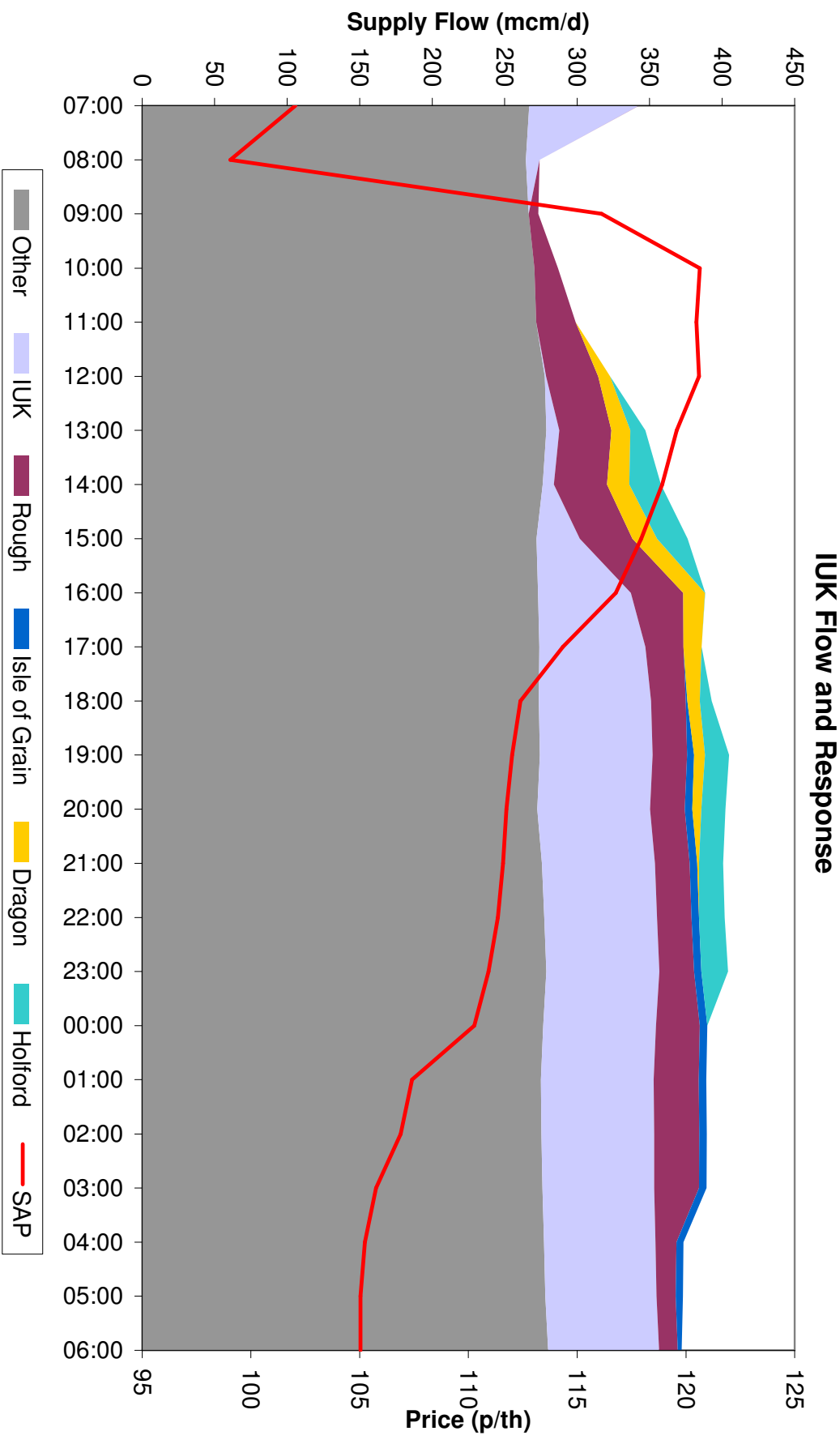
11:07 - A media release has been issued. A further update will be provided by 1200 UKT.

11:51 - Interconnector UK Limited has a technical issue at its Bacton terminal which stopped gas flow into the UK. We have now resumed flow at a reduced rate. In parallel we are working to resume normal operations.

13:50 - Interconnector UK Limited is pleased to announce that the fault in the reheating system at the Bacton Terminal has been rectified. In order to configure its equipment to re-establish flows at full capacity IUK will be suspending flows at the Bacton terminal at approximately 1400 UKT. This process will take approximately 1 hour and once completed IUK expects to be able to flow at full capacity.

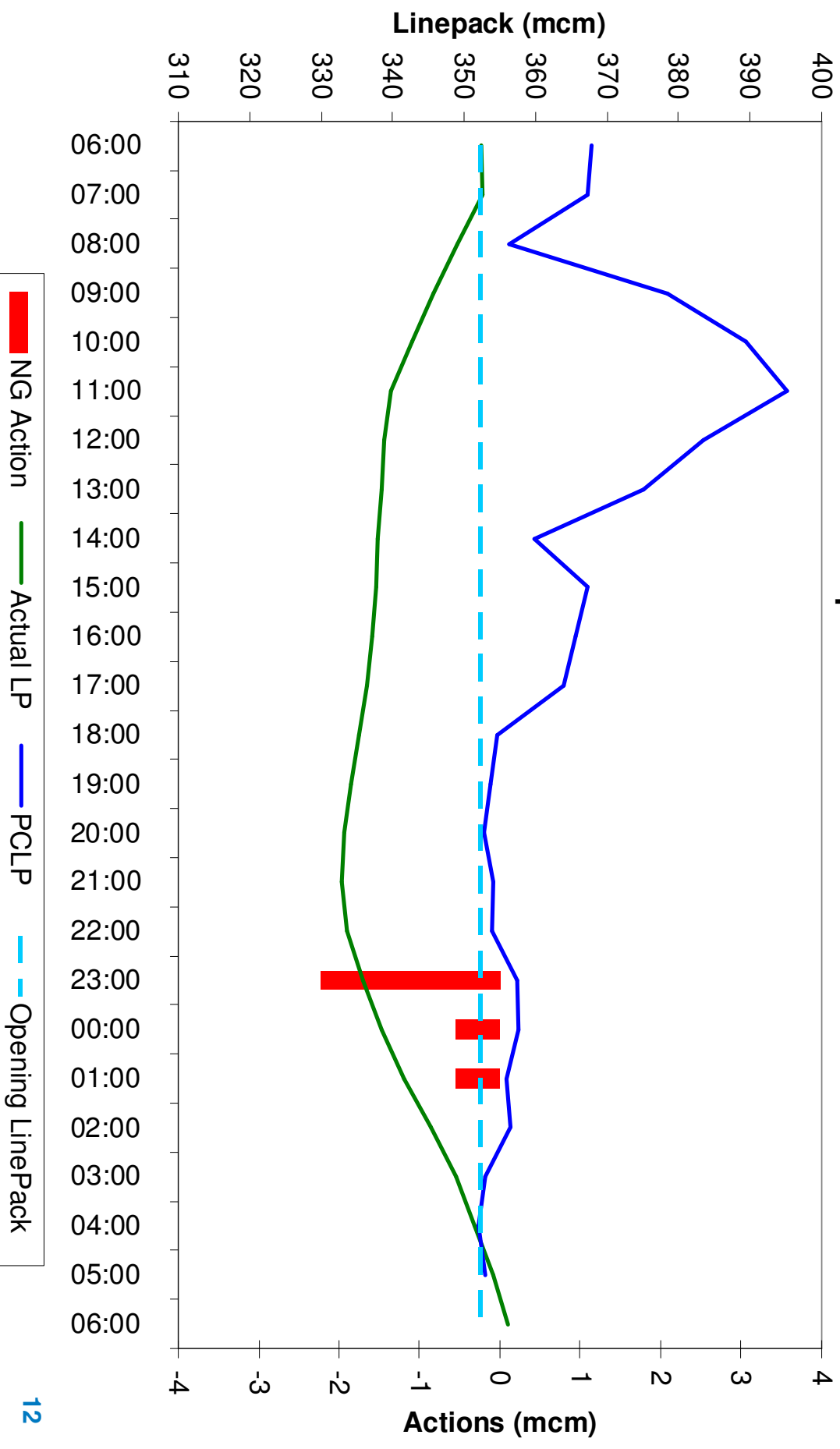
15:04 - Interconnector UK Limited can confirm that normal operations have now resumed and is expecting to flow at full capacity by 1530 UKT.

22nd March: Flows



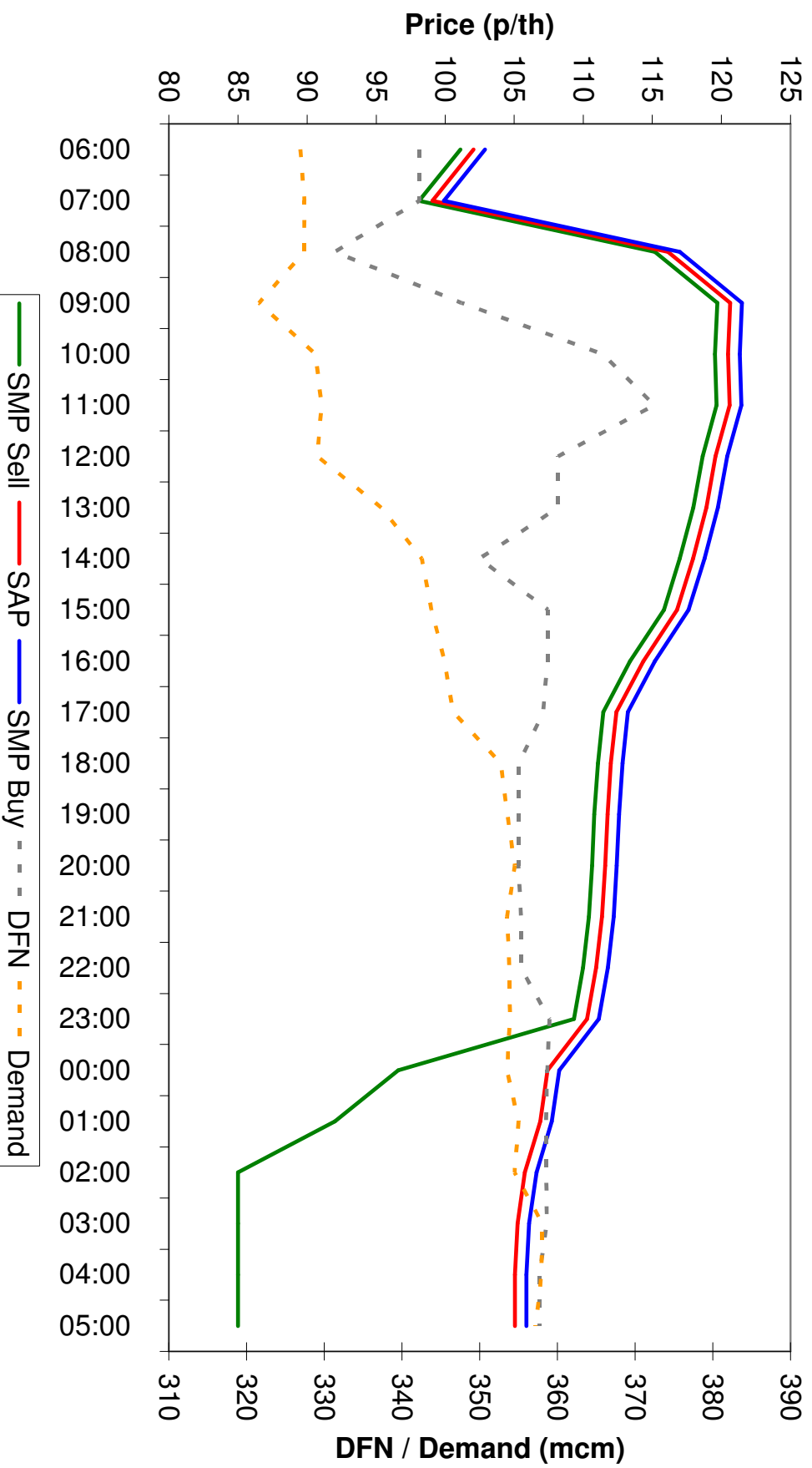
22nd March: Linepack

Linepack and NG Actions



Price and Supply & Demand

Price with Supply / Demand



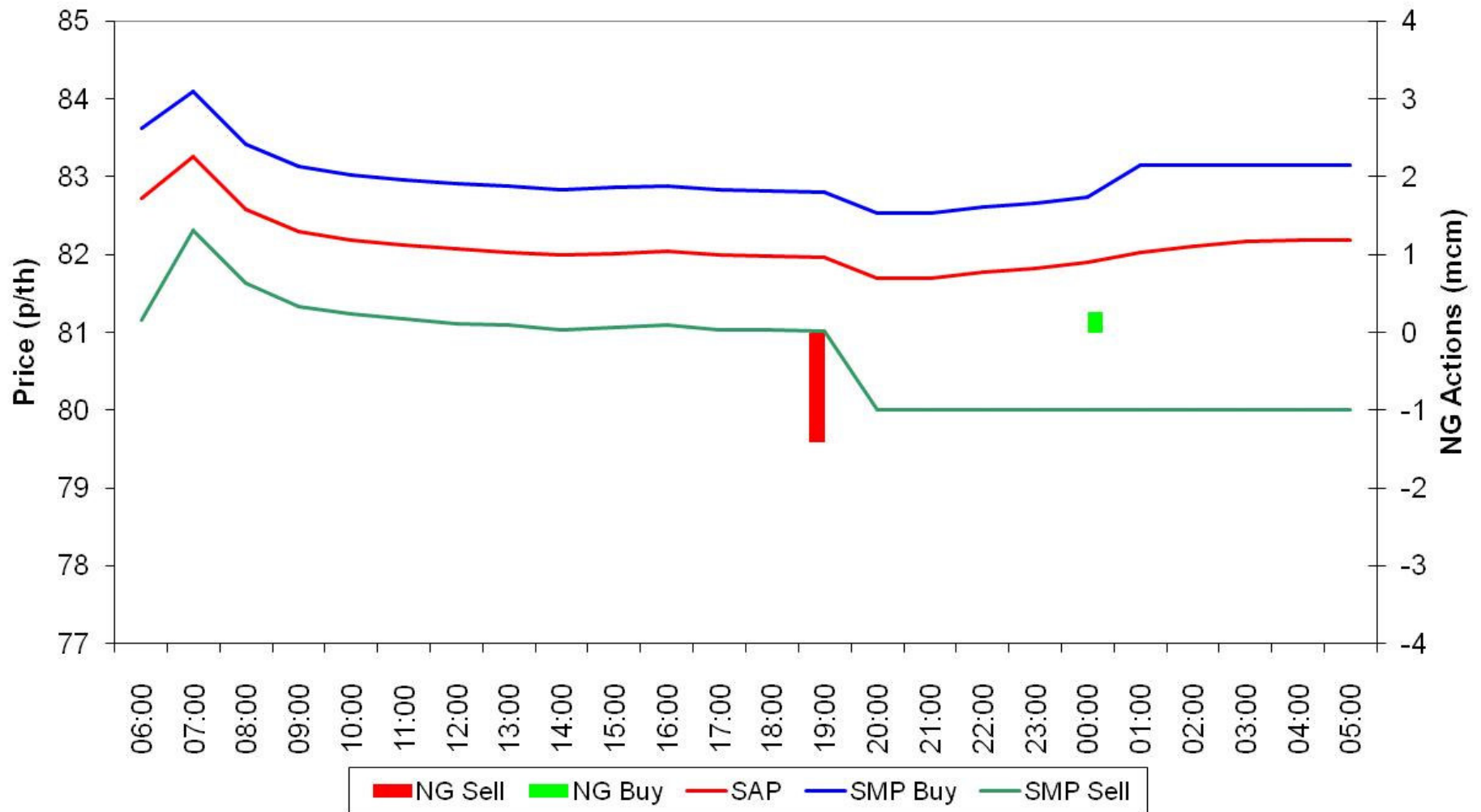
Operational Overview



Interesting Day Overview: 04th April 2013

4th April – Prices & NG Actions

Price and NG Actions

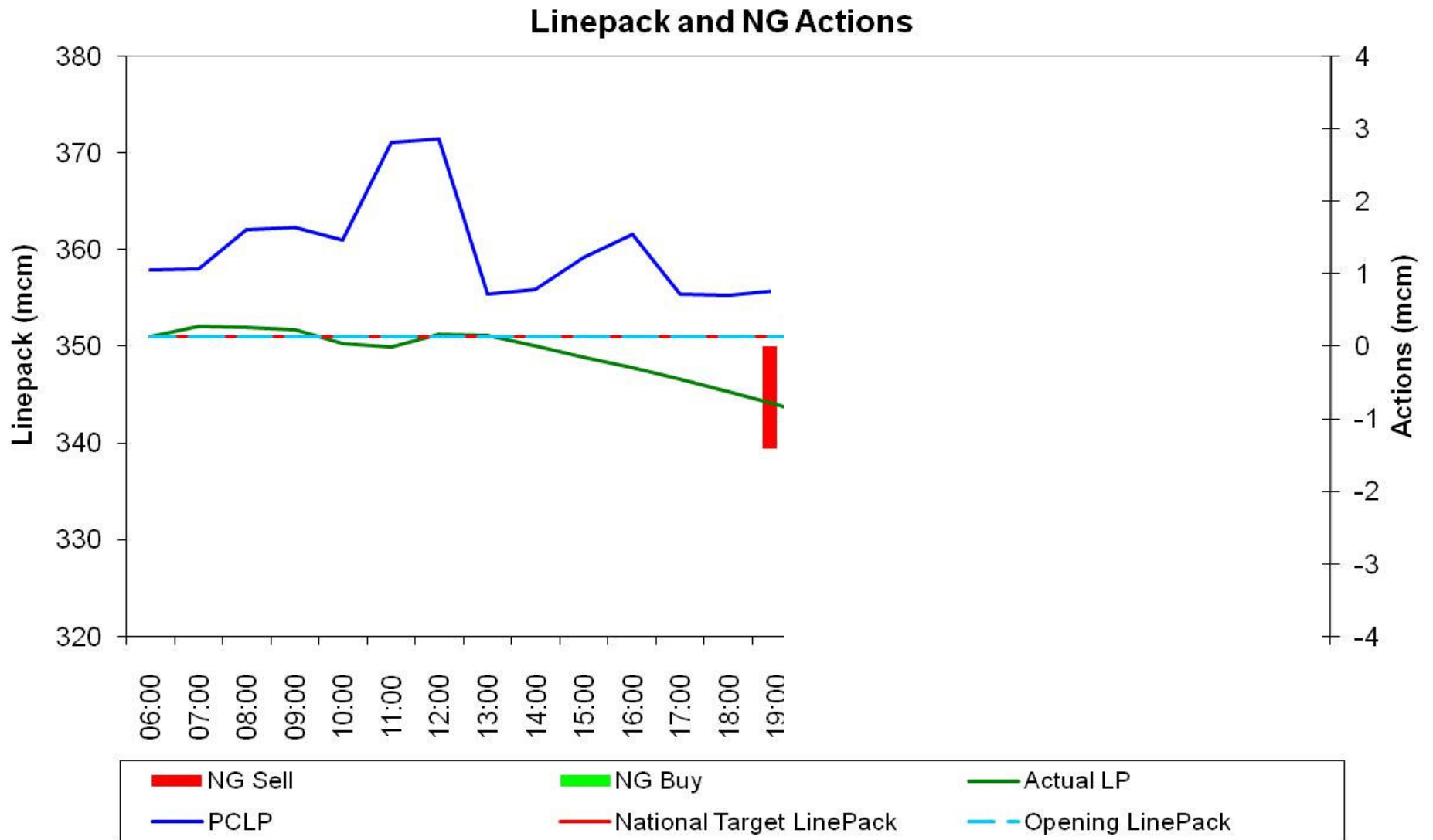


4th April: Opening Linepack

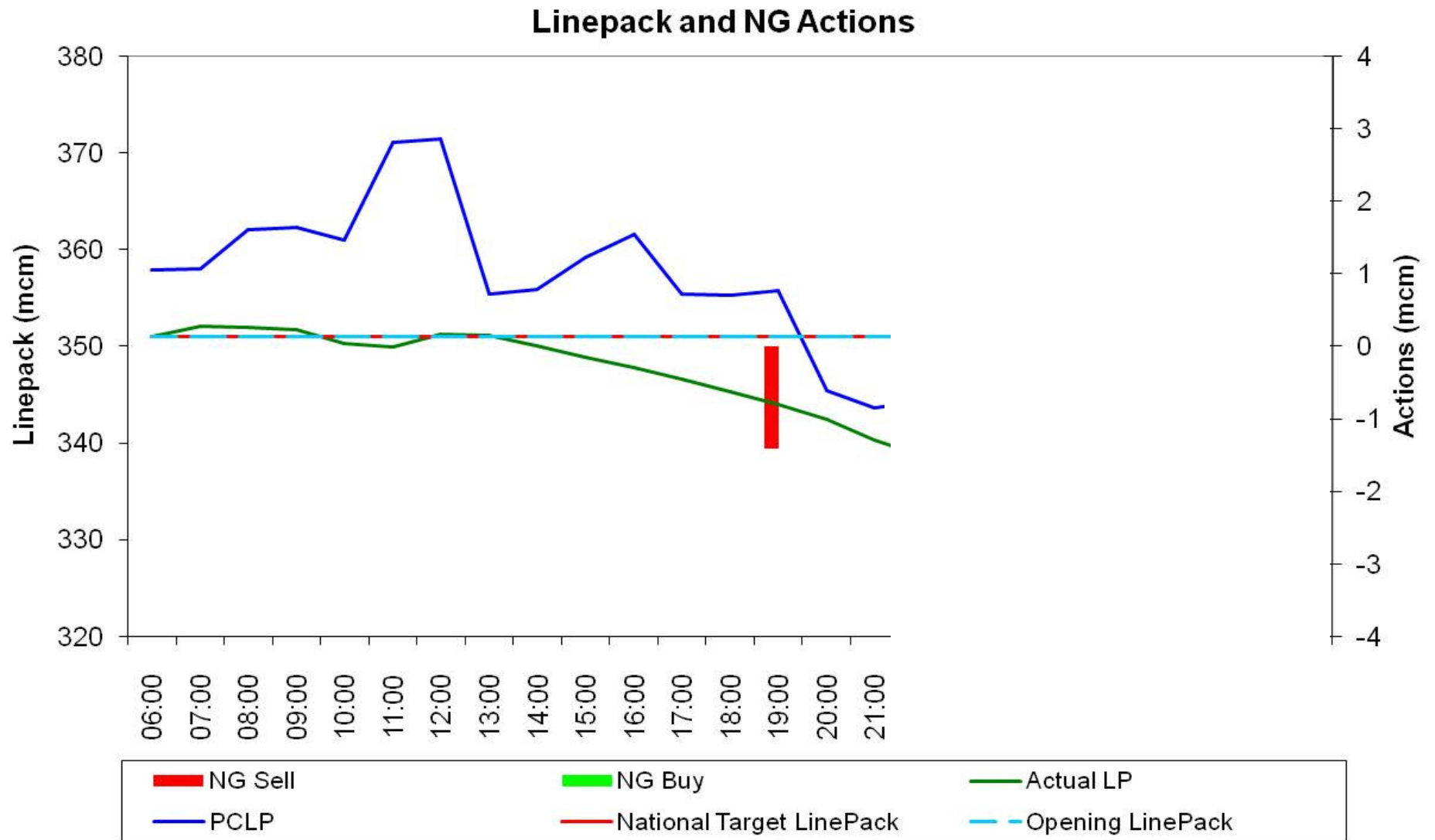
Linepack and NG Actions



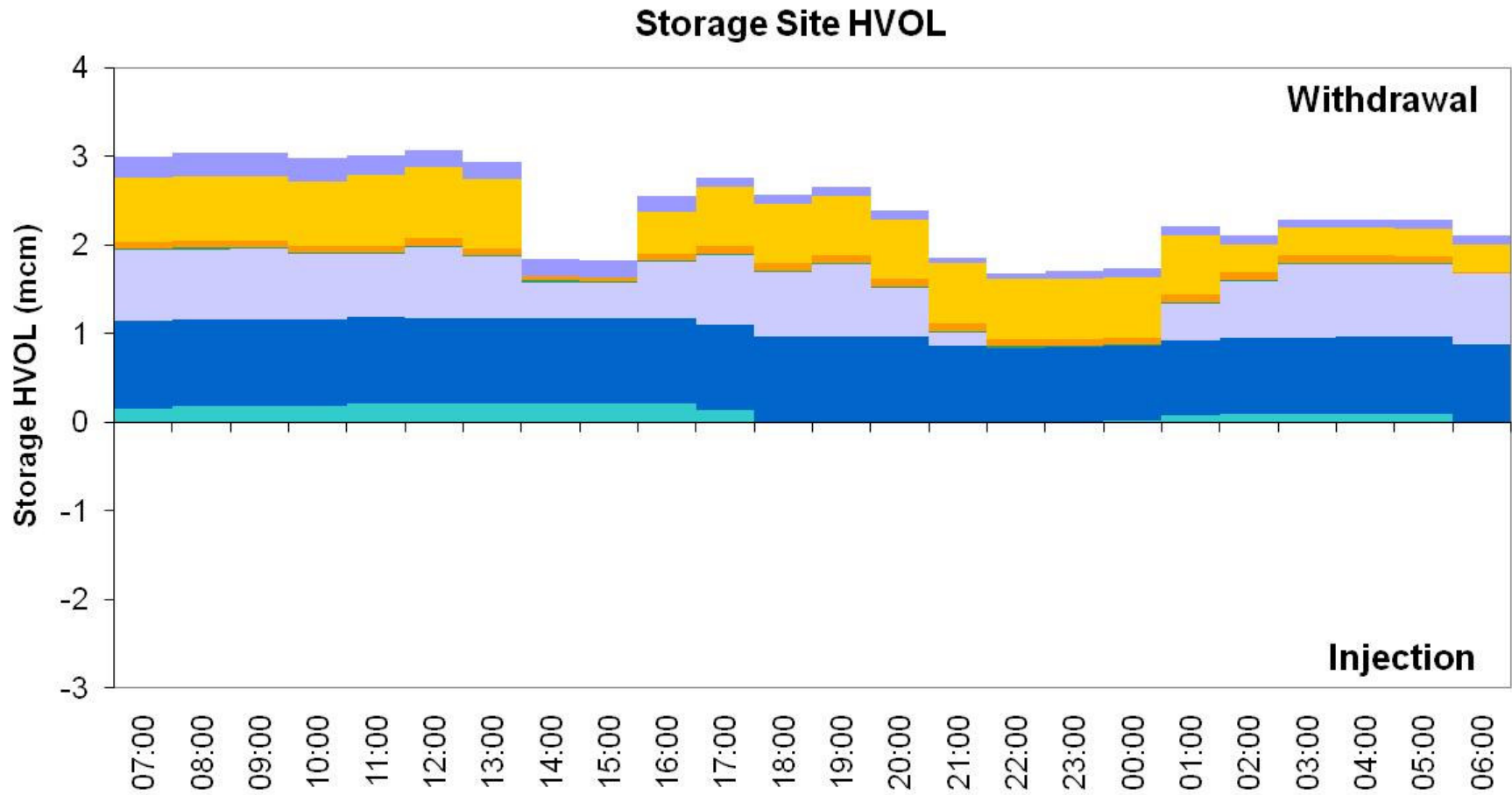
4th April: Linepack & NG Actions



4th April: Linepack & NG Actions

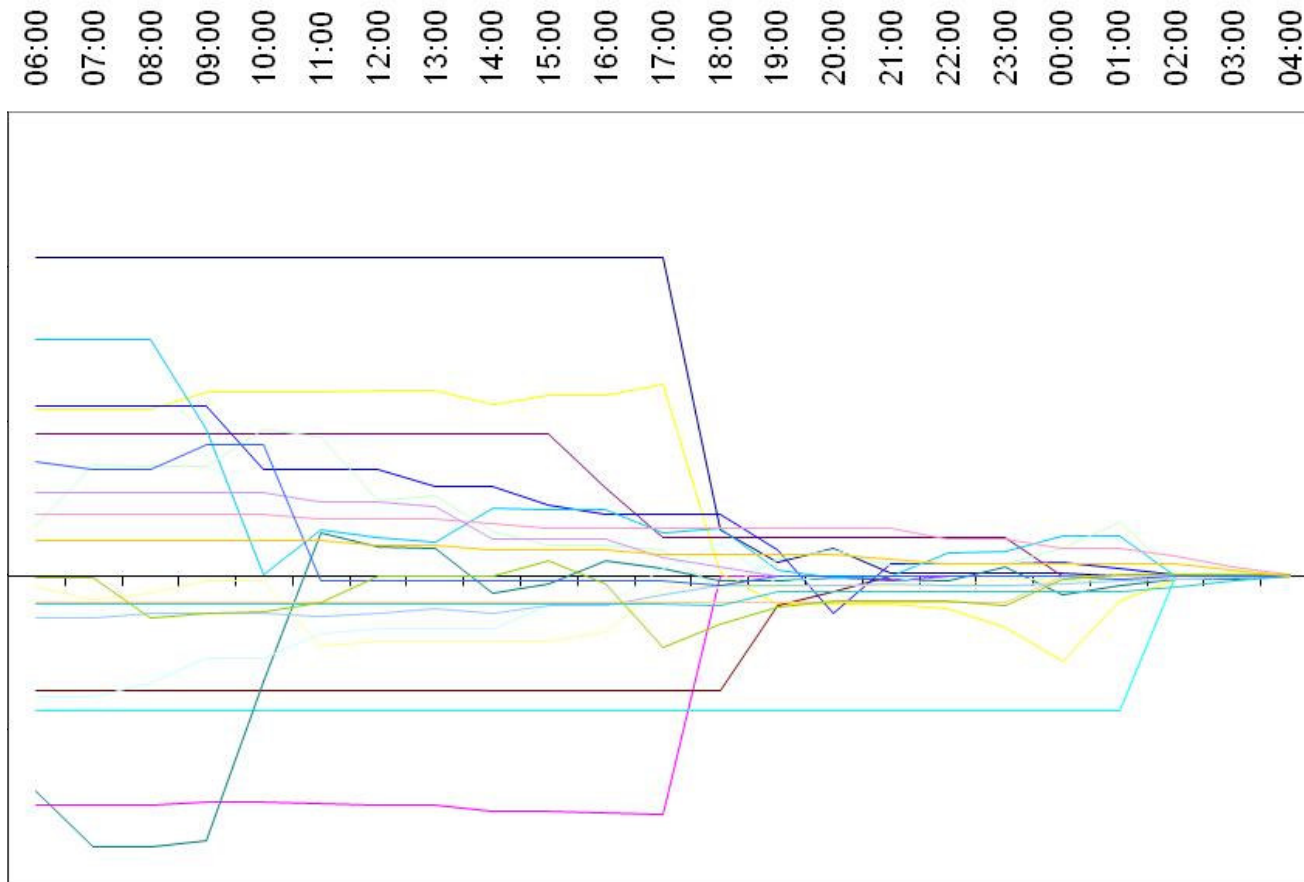


4th April: Storage Site HVOLs



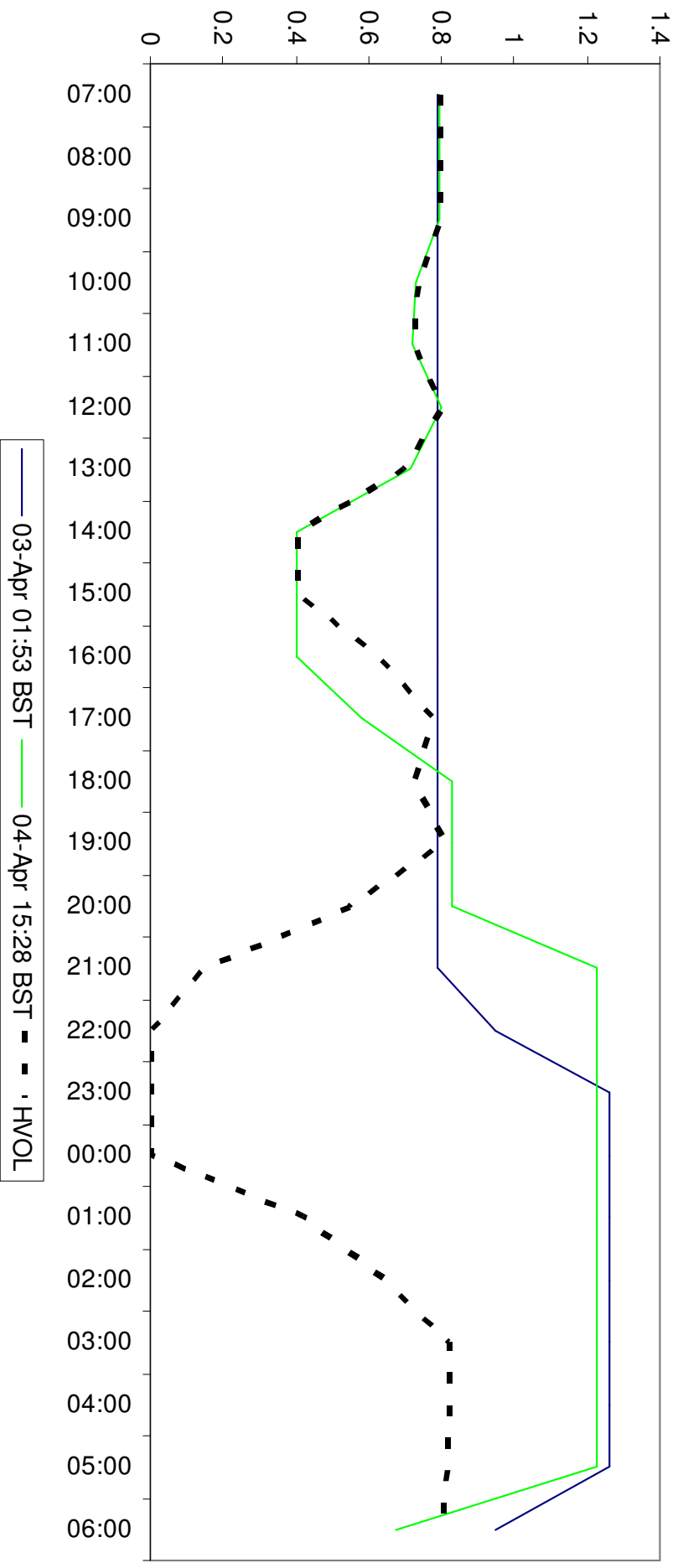
Shipper Imbalance

Hourly Nomination Imbalance (Top 20 Imbalanced Shippers)

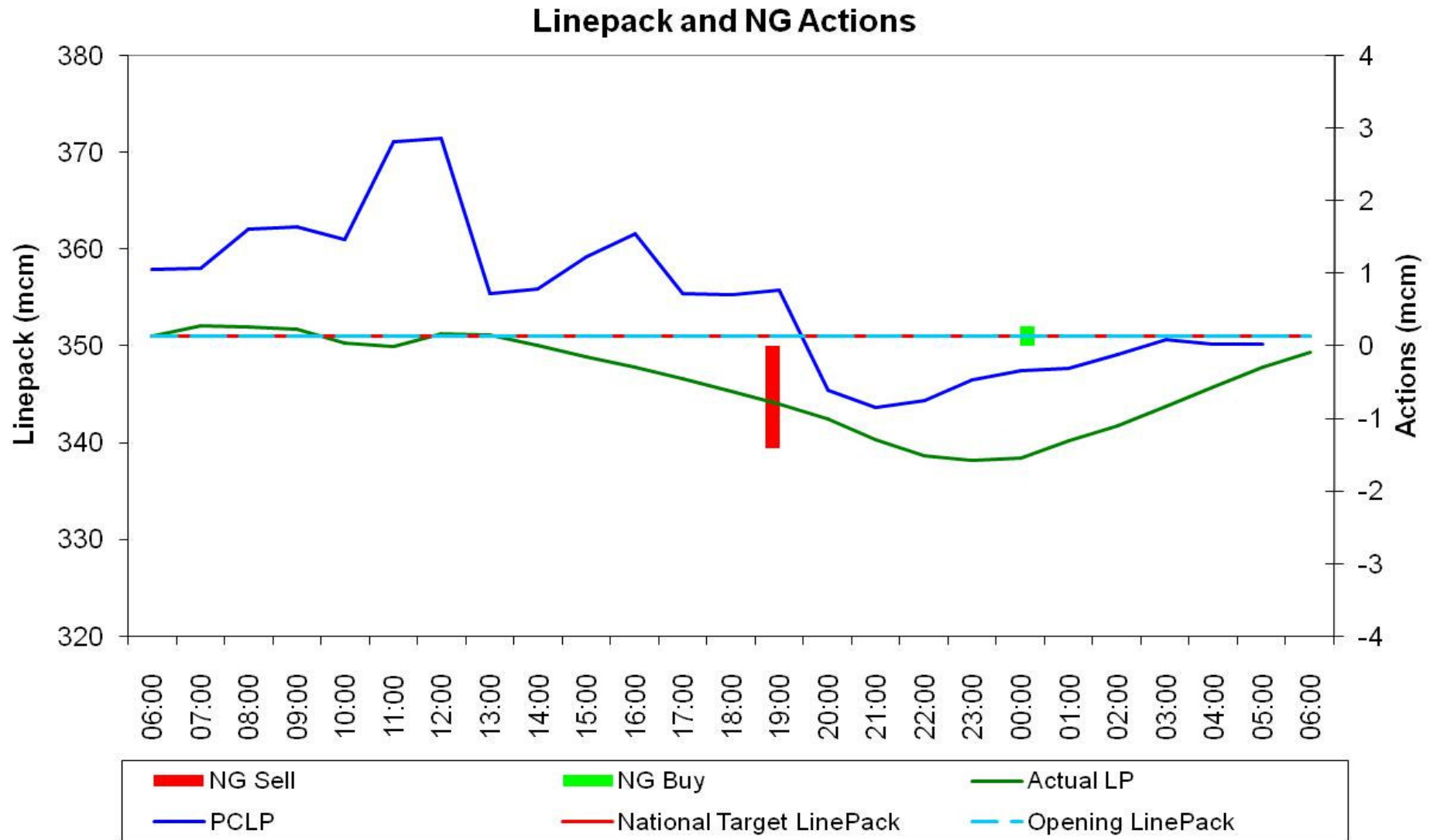


Imbalance (mcm)

Storage Site Notifications vs. Flows



4th April: Linepack & NG Actions



Operational Overview

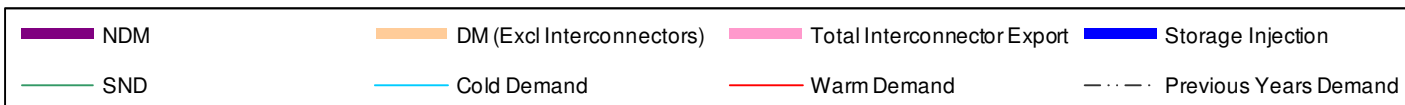
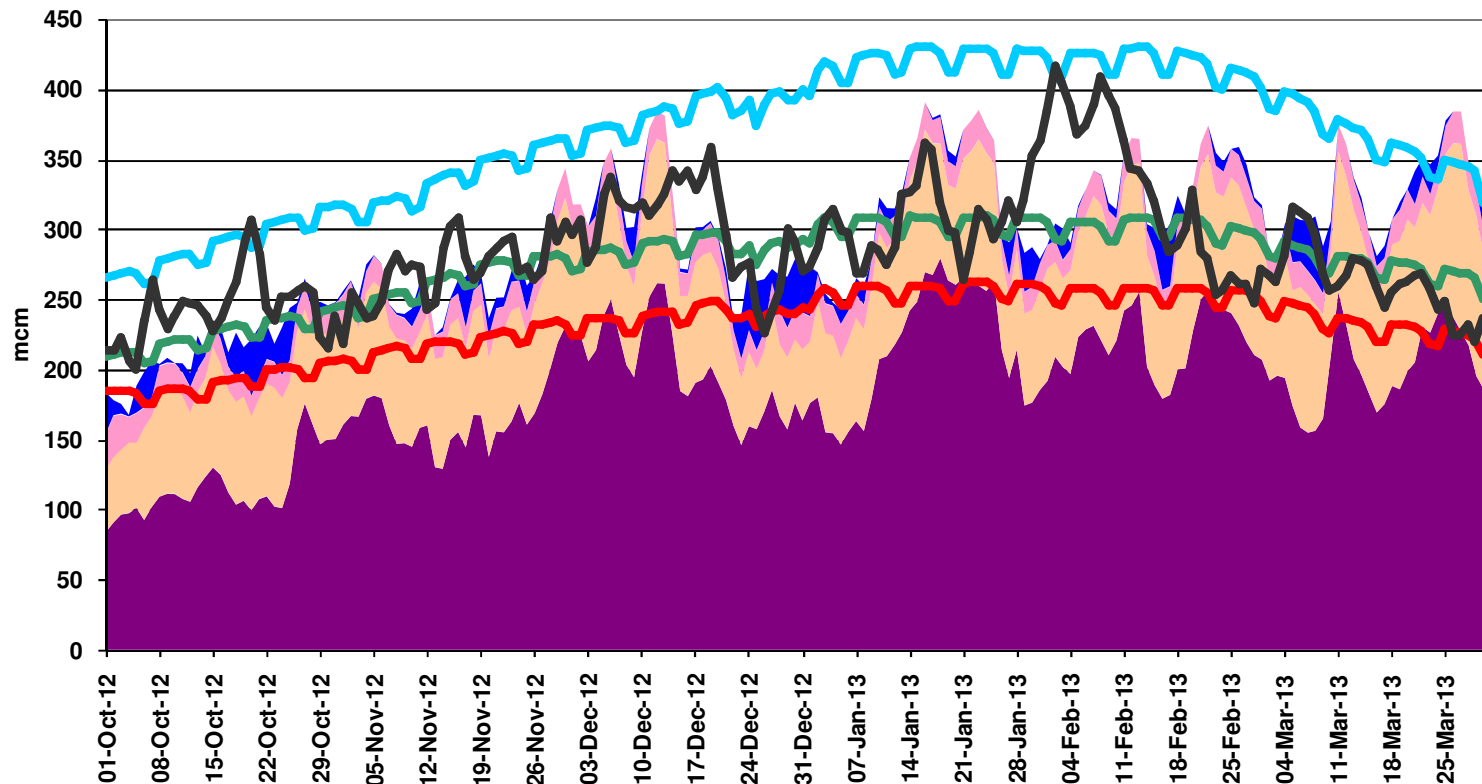


Winter 2012/13 Reflection

2012/13 Reflection

Extended Winter

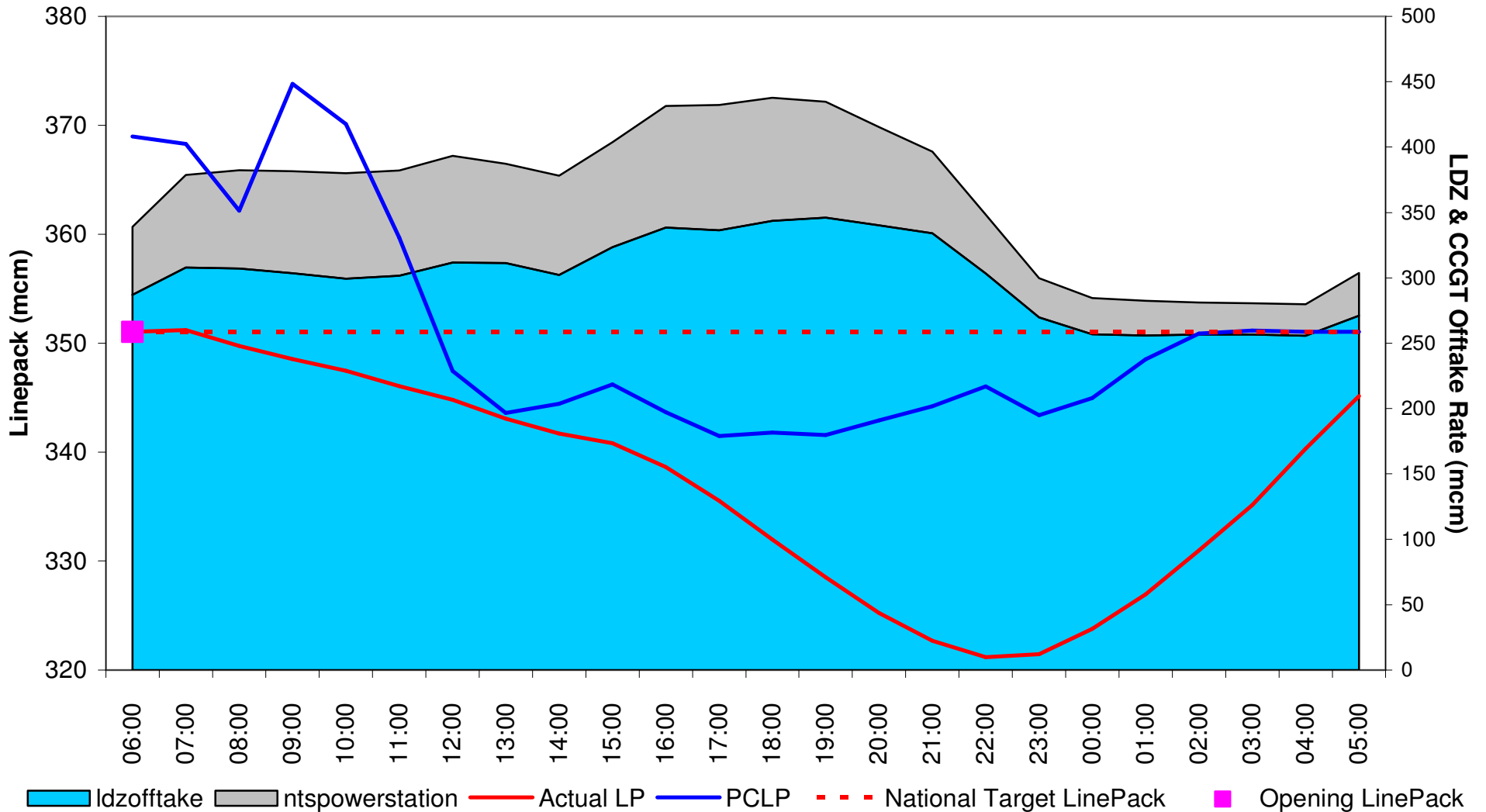
Gas Demand Breakdown
1st October 2012 to 31st March 2013 vs 2011/12



2012/13 Reflection

Linepack Swing

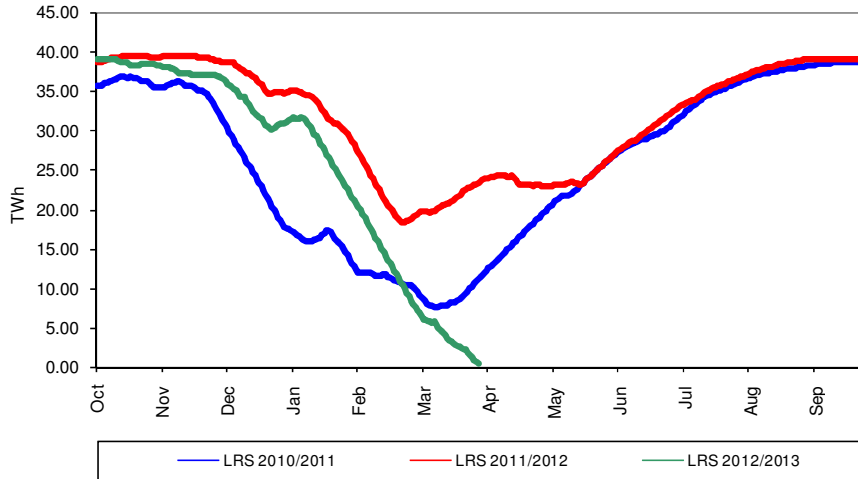
LDZ & CCGT and Linepack Swing



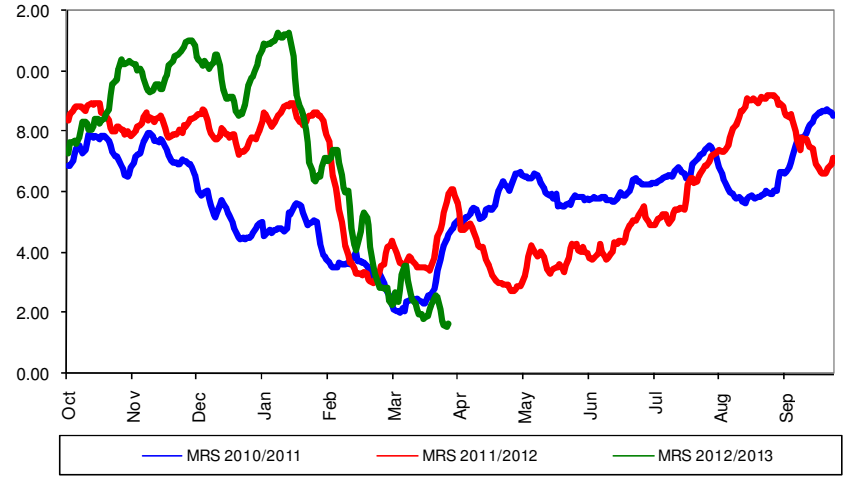
2012/13 Reflection

Storage Stocks

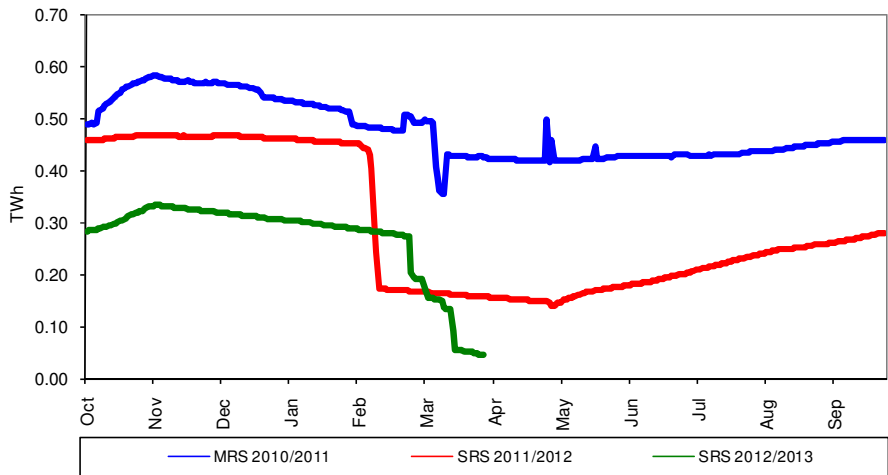
LRS Stocks



MRS Stocks

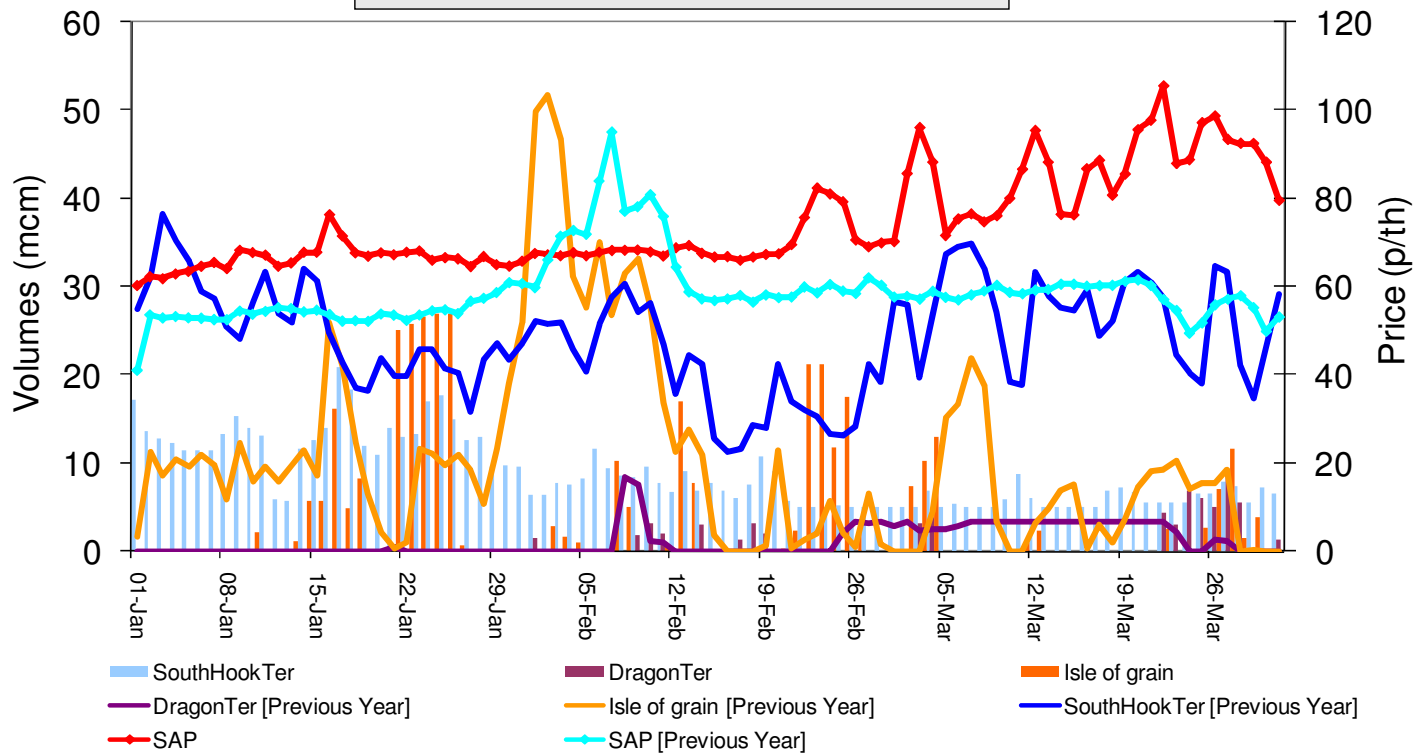
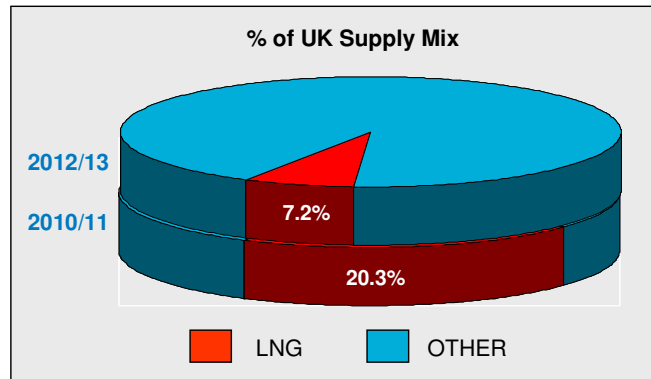


SRS Stocks



2012/13 Reflection

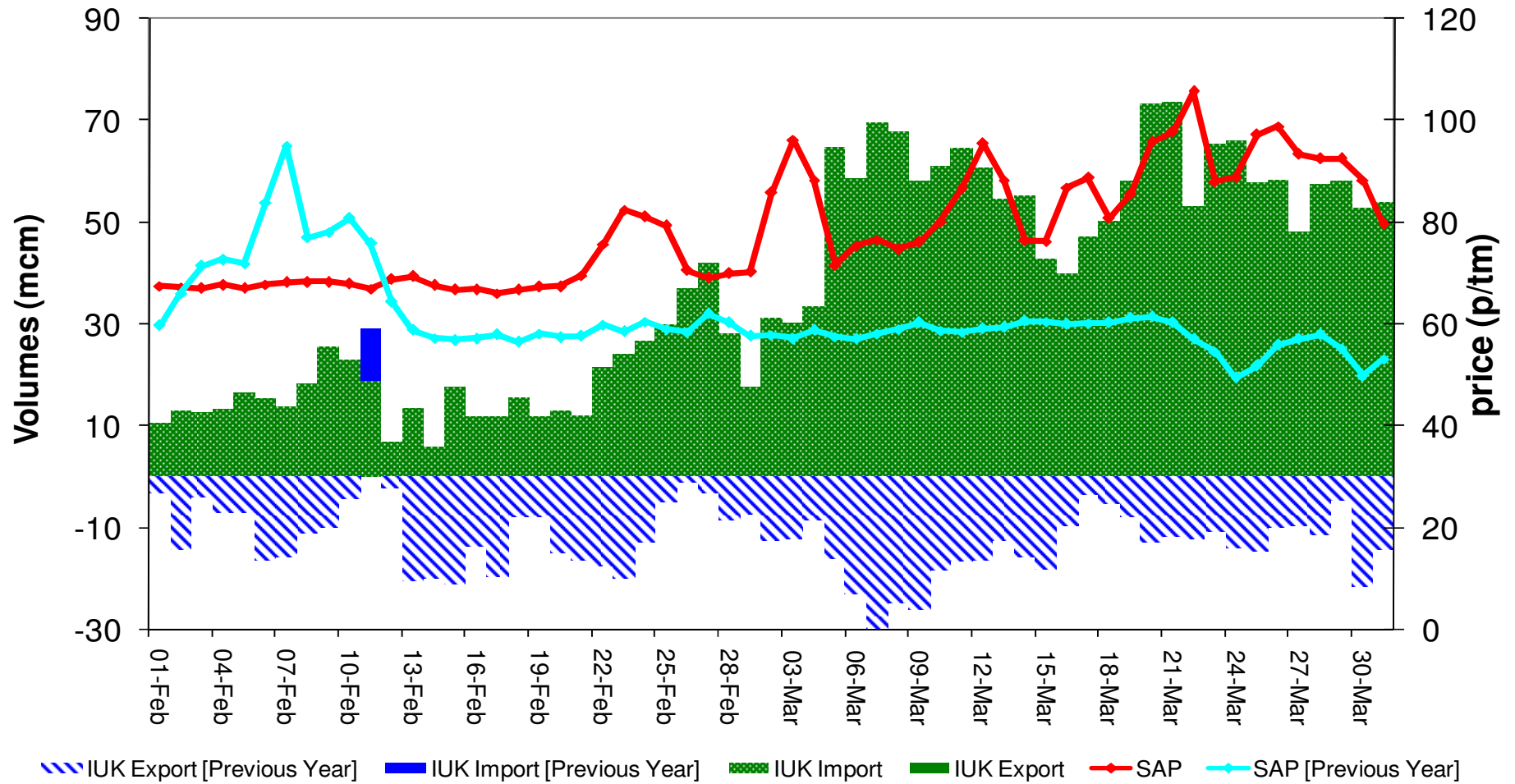
LNG



2012/13 Reflection

IUK

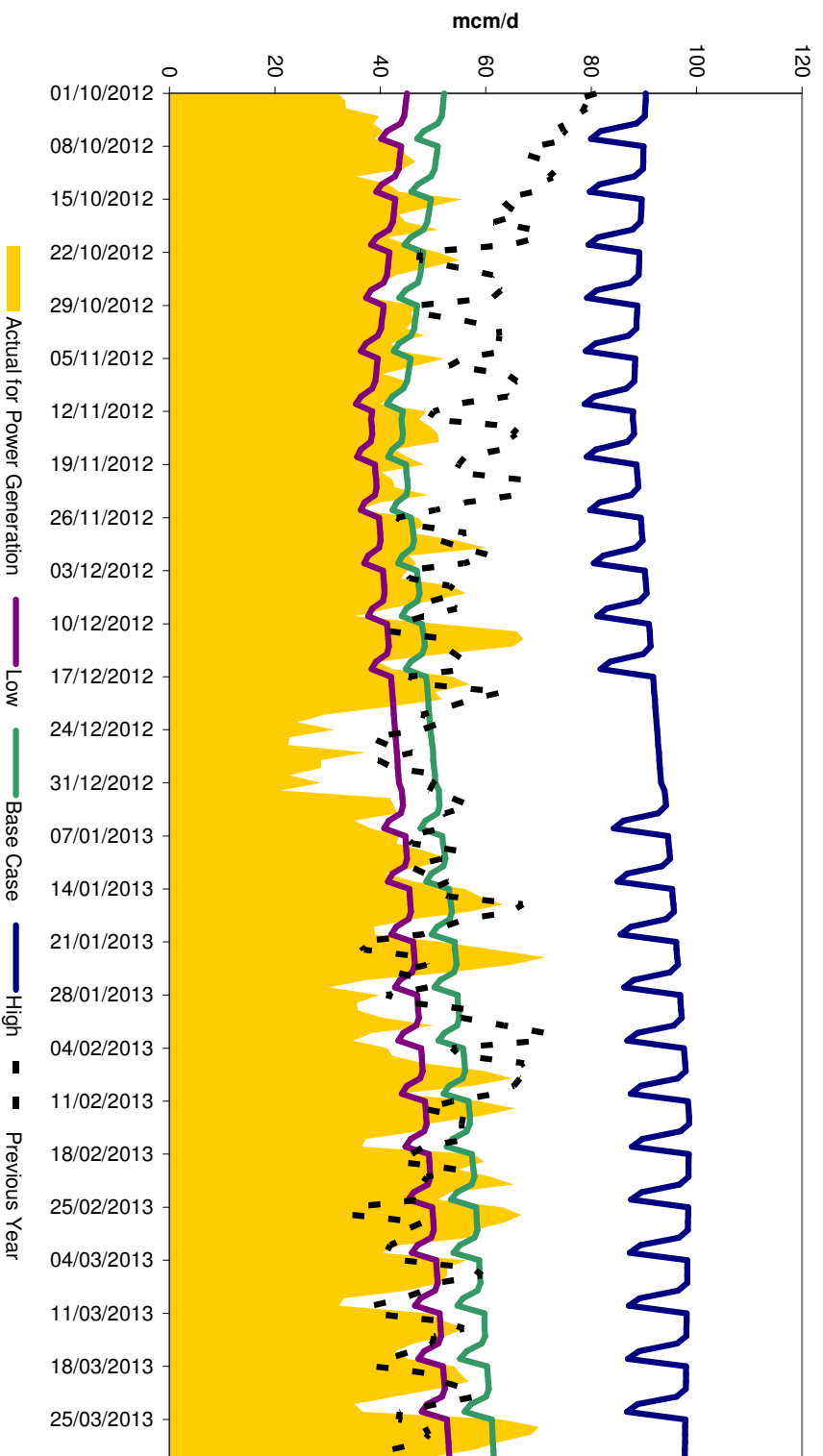
IUK Export / Import volumes Feb - Mar 2013 vs Previous Year / SAP



2012/13 Reflection

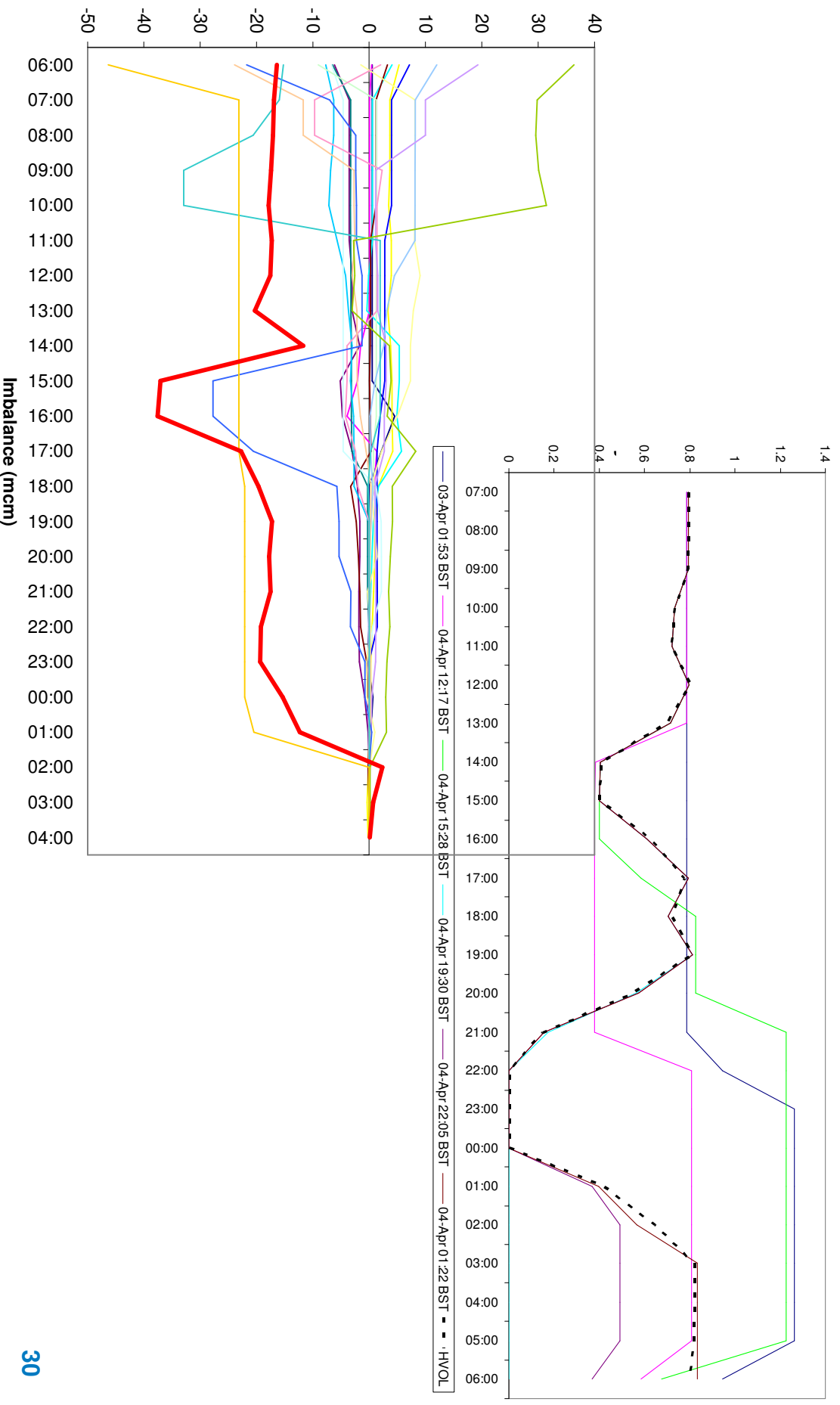
Power Generation

Gas Consumption for Power Generation



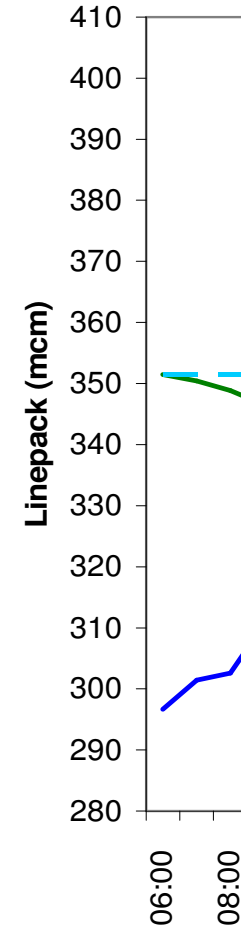
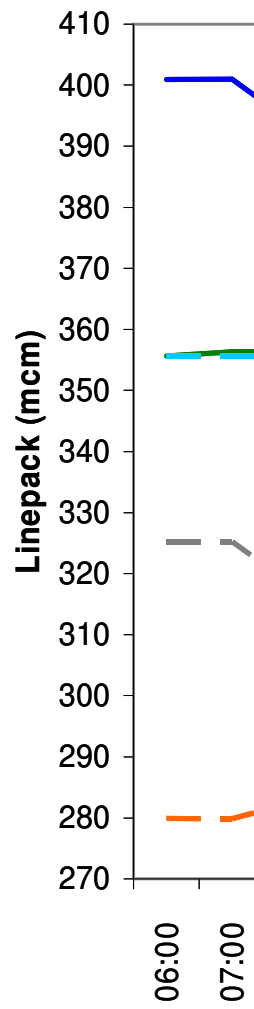
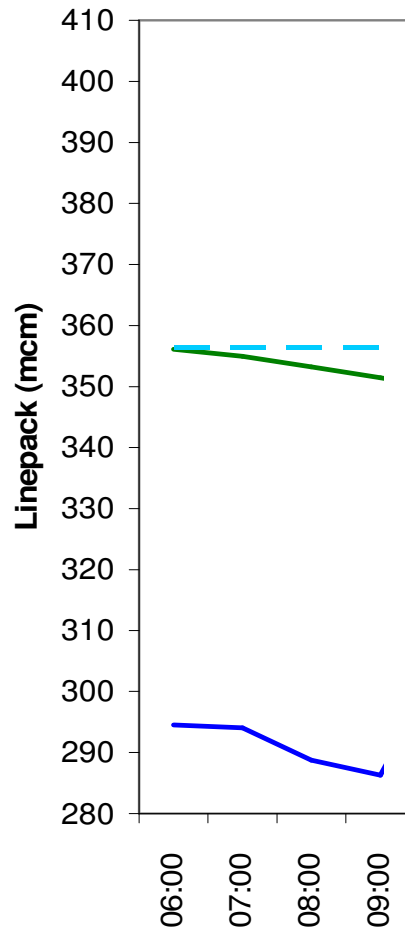
2012/13 Reflection

Data Accuracy



2012/13 Reflection

Opening PCLP



2012/13 Reflection

New Processes / Operational Complexity

- GDW / MN
- Enduring NTS Exit Arrangements
- Capacity Scalebacks
- Locational Actions

2012/13 Reflection

Prices

System Prices
1st Feb 2013 to 31st March 2013 Vs Previous Years SAP

